

GS 47-30  
 This map is not a certified survey and has not been reviewed by a local government agency for compliance with any applicable land development regulations.

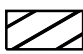


Timber buyer and Logger are responsible for implementation of applicable river rules and BMP's.

**PLACE OF SALE**  
 Thursday  
 December 29, 2011  
 11:00 A.M.

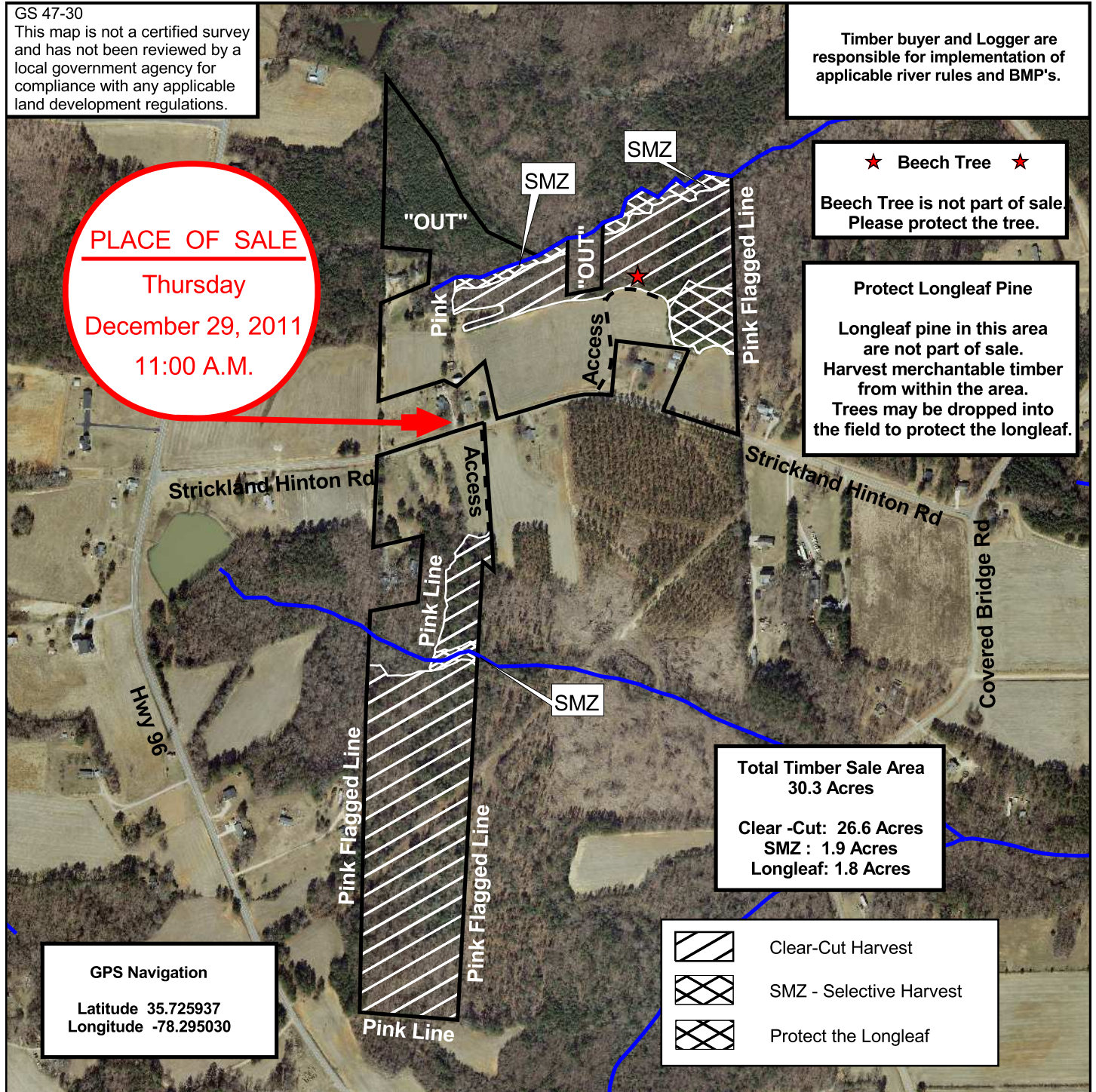
★ Beech Tree ★  
 Beech Tree is not part of sale  
 Please protect the tree.

Protect Longleaf Pine  
 Longleaf pine in this area are not part of sale.  
 Harvest merchantable timber from within the area.  
 Trees may be dropped into the field to protect the longleaf.

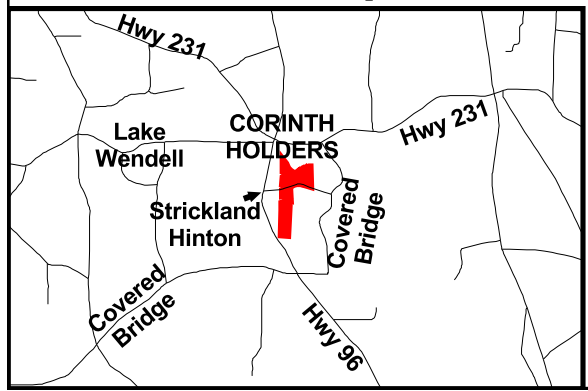
Total Timber Sale Area  
 30.3 Acres  
 Clear -Cut: 26.6 Acres  
 SMZ : 1.9 Acres  
 Longleaf: 1.8 Acres

-  Clear-Cut Harvest
-  SMZ - Selective Harvest
-  Protect the Longleaf

GPS Navigation  
 Latitude 35.725937  
 Longitude -78.295030




Location Map



**James D. Hinton & Curtis E. Hinton**  
**Timber Sale Map, Fall 2011**

**Johnston County, North Carolina**

DATE: December 9, 2011	SCALE: 1:7920
DRAWN BY: Bradley J Rawlings	APPROVED BY: Bradley J Rawlings

 **RAWLINGS CONSULTING FORESTRY, PLLC**  
 P.O. Box 1134  
 Wendell, North Carolina 27591

Voice/Fax: 919-365-5451    [www.rawlingsforestry.com](http://www.rawlingsforestry.com)    Toll Free: 800-457-1121